

2025-07-15 08:00 CEST

More grain tank volume, new engines and additional model for LEXION high-performance combine harvesters from CLAAS

In its 30th anniversary year, CLAAS is giving the LEXION high-performance combine harvester a makeover and introducing an additional model. The main changes are to the grain tank volume, engine power and cab. The LEXION 7500, LEXION 8700 and LEXION 6800 are also getting new engines.

At Agritechnica 1995, CLAAS took combine harvester performance to a new level in terms of power, efficiency and comfort with the LEXION 480. Today, 30 years and more than 75,000 LEXIONs built later, the four LEXION 8000, 7000, 6000 and 5000 series with their unique range of equipment inspire customers all over the world with their unrivalled harvesting performance and efficiency as well as maximum comfort.

With a view to the upcoming Agritechnica and the 2026 harvest, CLAAS is introducing a number of important innovations to the top combine harvester class. In addition to further improved performance, the focus is primarily on operator comfort.



For model year 2026, CLAAS is introducing new engines, larger grain tanks and new cab features for the LEXION combine harvesters.

New LEXION 8500 and MAN engines throughout the LEXION 8000 series.

From the 2026 model year, the LEXION 8000 series will now comprise five performance classes in both wheel and TERRA TRAC versions:

Model	Feed channel	Engine	Grain tank
LEXION 8900 TT	1,700 mm	MAN D42; 790 HP	18.000 l
LEXION 8800 / 8800 TT	1,700 mm	MAN D42; 700 HP	15.000 / 18.000 l
LEXION 8700 / 8700 TT	1,700 mm	MAN D38; 646 HP	15.000 / 18.000 l
LEXION 8600 / 8600 TT	1,700 mm	MAN D38; 598 HP	13.500 / 15.000 l
LEXION 8500 / 8500 TT	1,700 mm	MAN D26; 549 HP	12.500 / 13.500 l

The new LEXION 8500 / 8500 TERRA TRAC rounds off the lower end of the series, resulting in a narrower power range and giving customers a wider choice of suitable configurations in terms of engine power and grain tank

volume. The new entry-level model in the LEXION 8000 series features the familiar MAN D26 six-cylinder engine with a displacement of 12.4 litres and 549 hp as well as DYNAMIC POWER and DYNAMIC COOLING - which is now also used in the LEXION 7500 / 7500 TERRA TRAC with a rated output of 466 hp. The 8700 and 8600 models, on the other hand, are equipped with the MAN D38 six-cylinder engine with a displacement of 15.2 litres, which impresses even more with its strong and stable torque as well as fuel efficiency. The rated output is 646 and 598 hp respectively.

In terms of separation, all models work with the APS SYNFLOW HYBRID system with a feed channel width of 1,700 mm, three drums, a 755 mm threshing drum and two axial rotors that are 445 mm in diameter and 4,200 mm long. The LEXION 8500 / 8500 TERRA TRAC is equipped with five rotor concaves with a maximum rotor speed of 1,000 rpm, while the larger LEXION 8600 / 8600 TERRA TRAC to LEXION 8900 TERRA TRAC models offer even more separation performance with six rotor concaves and a maximum rotor speed of 1,200 rpm.



The LEXION 8700 / 8700 TERRA TRAC will be available with the largest grain tank in its class from the 2026 model year.

LEXION 8700: Largest grain tank in its class.

In response to numerous customer requests, CLAAS is also increasing the grain tank sizes. The LEXION 8600 / 8600 TERRA TRAC can now be supplied with either a 13,000 or 15,000 litre grain tank volume. The LEXION 8700 / 8700 TERRA TRAC is now even available with the largest grain tank with a volume of either 15,000 or 18,000 litres and an emptying capacity of 180 l/s as standard, making it the largest grain tank in its class.

Cab with Apple CarPlay and new interior lighting.

Apple CarPlay and Android Auto 6.75 inch touch display, DAB+ radio receiver and Bluetooth will be available in the cab from the 2026 model year. A blow gun with a 2-metre-long spiralled hose is also available for quick and easy cleaning of fittings and the cab floor. Thanks to new interior lighting in the cab, working in the evening and at night is even safer and more pleasant. New storage compartments in the left-hand B pillar offer additional storage options.

From the outside, all LEXION models from the 2026 model year are recognisable by new LED rotating lamps and new rear lamps with a modern look, which also ensure greater safety in the field and on the road.







Numerous new features such as the Apple CarPlay radio, additional storage compartments and the blow gun further enhance the cab and increase operator comfort.

CLAAS will also be offering new operator and visibility packages for the LEXION from the 2026 model year. Each of the three equipment packages enables customised configuration of driver comfort, headlight and camera equipment with a wide range of features, such as leather upholstery through to swivel leather seats, wireless charging for smartphones, three LED headlight packages, electrically adjustable and heated rear-view mirrors and various camera equipment. In addition, a compressed air connection is available in the cab access area for cleaning the connections on the intake duct.

CEMOS driver assistance and machine optimisation combined.

With its combine harvesters, CLAAS has been a world leader in grain harvesting for decades. LEXION and TRION set the standard in the areas of self-learning machine optimisation and driver assistance. To make it easier for customers to configure the right CEMOS equipment, the available functionalities are bundled into three CEMOS packages:

- CEMOS AUTO for 10 percent throughput capacity, significant

learning effects and noticeably more driving comfort thanks to dialogue-based optimisation, automatic regulation of the forward speed and automatic crop flow monitoring. The menu-guided loss sensor calibration is unique on the market.

- CEMOS AUTO Plus for up to 20 percent performance optimisation and automatic optimisation of residual grain separation, cleaning and digital sweep control.
- CEMOS AUTO Professional for more than 20 percent more output, including automatic setting of the threshing unit and camera-based, permanent optical monitoring, analysis and optimisation for maximum machine throughput with the best grain quality and minimum trash.

In addition, sales packages are also available for the cab equipment with a full focus on operator comfort, as well as for the areas of work lighting and external camera monitoring, which sensibly bundle various features and thus simplify the configuration of the desired machines.

Fully networked with CLAAS connect.

From machine configuration, purchase processing, access to product documentation and the lubricant guide, maintenance planning and documentation through to cross-manufacturer fleet management via DataConnect, yield maps and other smart farming applications: CLAAS connect also enables comprehensive networking for the LEXION with automated documentation and access from the office or from a mobile device while travelling:

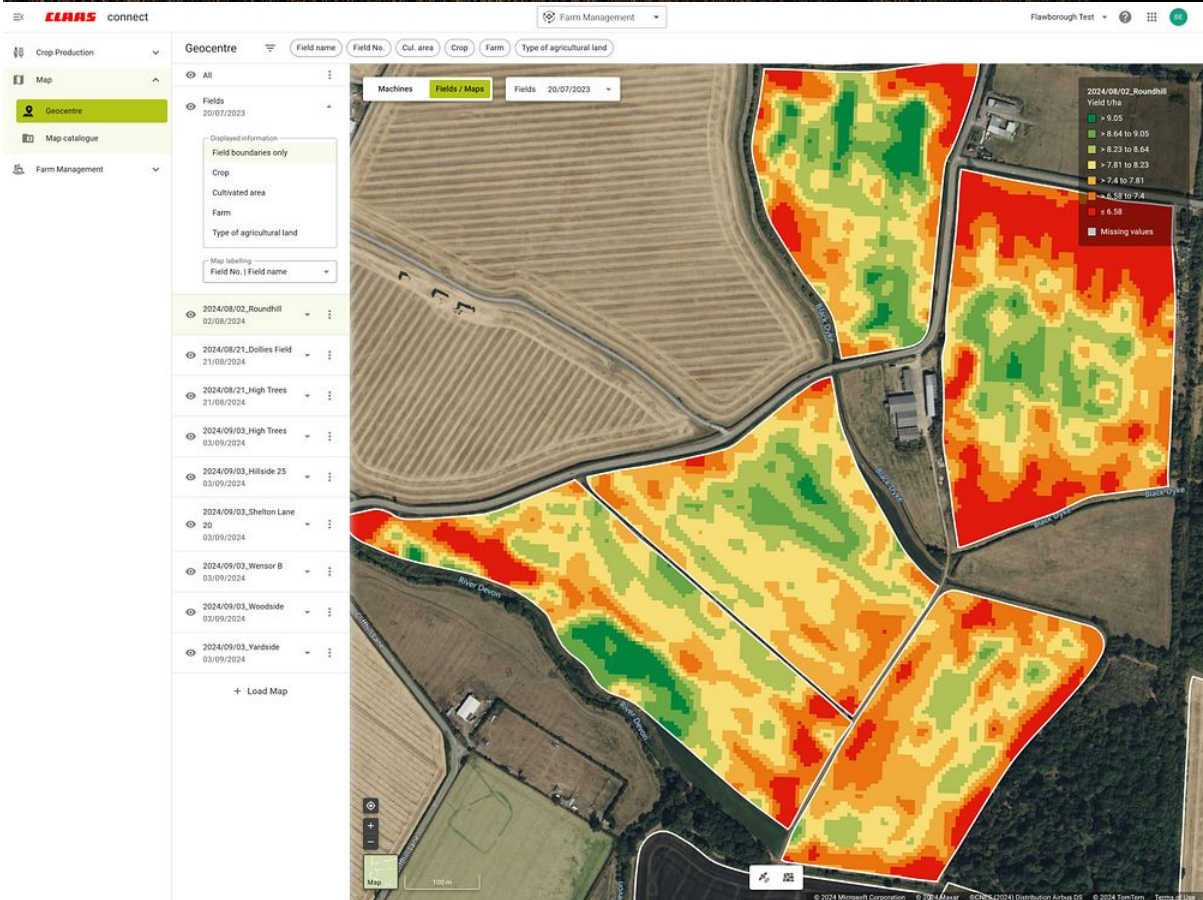
- **Precise track guidance:** CEMIS 1200 as an intuitive steering terminal; whereby the optimum reference lines can be planned in advance in CLAAS connect based on the field boundaries and then used and shared.
- **Clear job management:** Jobs are conveniently created in CLAAS connect and called up on the CEMIS 1200. Orders can be documented and managed directly on the machine.
- **Automatic documentation with CLAAS connect:** Automatic documentation of field work is also possible without creating jobs for a complete database. Interpolated yield maps of outstanding quality can be created automatically from the machine's yield points.
- **Real-time information:** Machine position and status as well as current machine data, settings and performance can be viewed

from anywhere. This enables convenient navigation to the machine's operating location, for example. In addition, CLAAS connect informs the user how long the work in the field is likely to take - regardless of how many machines are currently working in the field. This allows harvesting operations and harvesting logistics to be optimally planned.

- **Analyse and optimise:** Detailed analyses enable optimisations and comparisons between different machines. Efficiency, performance and yield data can be analysed as a whole.
- **Precise planning:** The remaining working time per field can be estimated based on current performance data. CLAAS connect also provides detailed field overviews and satellite data for monitoring vegetation and pre-planning harvesting operations.

The most important machine-related CLAAS connect functions are also summarised as packages for the customer and are available for TRION and LEXION:

- **Connect Package** includes the 5-year *Machine connect* licence for displaying machine and service information in CLAAS connect and the Quantimeter for yield recording
- **Connect Package Professional** extends the connect package with the GPS PILOT CEMIS 1200 including activations for RTK use, TC-GEO functionality and order management.
- The full range of functions in CLAAS connect is available with the **upgradeable farm-based licences**. These are valid per farm and not per machine, and therefore enable a wide range of applications across several machines. All functions relating to automatic documentation and Precision Farming are covered.



CLAAS connect also enables intuitive and largely automated machine and data management for the LEXION in various available licences and expansion levels.

The most important new features of the LEXION at a glance:

- *LEXION 8500 / 8500 TERRA TRAC complements the LEXION 8000 series as an entry-level model with MAN D26 engine and 549 hp as well as a 15,000 / 13,500 litre grain tank.*
- *LEXION 8700 / 8700 TERRA TRAC and 8600 / 8600 TERRA TRAC with MAN D38 engine and 646 and 598 hp respectively.*
- *LEXION 8700 / 8700 TERRA TRAC available with the largest grain tank in its class: 18,000 litre capacity and 180 l/s discharge rate.*
- *LEXION 7500 / 7500 TERRA TRAC with APS SYNFLOW HYBRID and LEXION 6800 / 6800 TERRA TRAC with APS SYNFLOW from model year 2026 with MAN D26 and 466 hp rated output.*
- *Cab update with AppleCar Play and Android Auto touch display with DAB+ and Bluetooth, blow gun and new interior lighting.*
- *Summary of CEMOS driver assistance and machine optimisation in three practical, customised packages: Up to 20 per cent more performance with significant driver relief and a consistently high level in all aspects of work quality.*
- *CLAAS connect machine and data management optionally combined as Connect Package or Connect Professional Package.*
- *New LED rotating lamps and rear lamps with a modern look and for more safety in the field and on the road for all LEXION models from the 2026 model year.*

About CLAAS

Founded in 1913, the family-owned company CLAAS (claas.com) is one of the world's leading manufacturers of agricultural machinery. Headquartered in Harsewinkel, Westphalia, the company is the world market leader in forage harvesters. CLAAS has also been the European market leader in another core segment, combine harvesters, for several decades. CLAAS is also a world leader in agricultural technology with tractors, agricultural balers and grassland harvesting machinery. The product range also includes state-of-the-art agricultural information technology. CLAAS employs 12,000 people worldwide and achieved a turnover of 5 billion euros in the 2024 financial year.

Kontaktpersoner



Kristian Skødt Kristiansen

Produktchef CLAAS mejetærsker og finsnitter

krkr@da-machinery.dk

43297822